

JOÃO CARMO SIMÕES

ARQUITECTURA

Convite

Lançamento do Livro The Monocle Handbook Portugal publicado pela revista internacional Monocle e pela editora Thames & Hudson que destaca o nosso projecto Casa Azul.

Portugal

The
MONOCLE
Handbook



Monocle's editorial director
Tyler Brûlé and editor in chief
Andrew Tuck cordially invite you
to the launch of our latest title,
Portugal: The Monocle Handbook
– the first in a new series of
country-focused guides. We
look forward to hosting you
for an evening of fine drinks,
book signing and mingling.

VENUE

LAB – A Padaria Portuguesa,
Av. da República, 39B, 1050-187 Lisbon

DATE

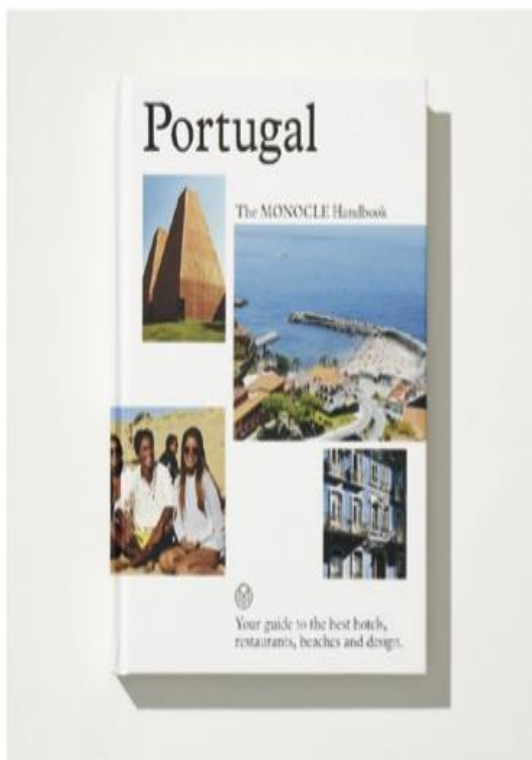
Tuesday 22 November

TIME

18.30 to 20.30

RSVP

Hannah Grundy at hg@monocle.com



Amanhã Terça

22 de Novembro

18.30 a 20.30

lab – A Padaria Portuguesa,

Av. da República, 39b, 1050-187 Lisbon

Portugal: The Monocle Handbook is a practical guide that will introduce you to the best the country has to offer as we present our favourite spots across the country. We've travelled from north to south (via the islands) to find innovative retailers and traditional ateliers, the chefs turning out the tastiest dishes and the sleekest hotels – not to mention undiscovered beaches and world-leading cultural venues. We even reveal the best neighbourhoods to invest in should you wish to put down roots in this sunny nation, plus the plucky entrepreneurs who've already made the move. It's time to pack your bags for Portugal.

Portugal

The MONOCLE Handbook



Your guide to the best hotels,
restaurants, beaches and design.

Casa Azul

Costa Nova, Aveiro

RESIDENCE
MODERNIST HOLIDAY HOME
Aveiro, Central

Portugal is the perfect choice for a beachside bolthole or rural hideaway – we peek inside two properties to get some inspiration. First up, a timber-clad retreat in Aveiro.



The coastal part of Aveiro is known as Portugal's Venice thanks to its canals and lagoon. Here gondolas, called *moliceiros*, have hand-painted prows and the seaside *palheiros*, fishermen's houses used to store nets, sport two-tone striped façades. Casa Azul, a compact modernist residence from the 1960s, blends into this landscape with its blue-and-white exterior that pays tribute to the area's unique vernacular.

Originally designed by architect Pedro Bernardes, the home has been renovated by Lisbon architects

João Carmo Simões and Daniela Sá. The pair have maintained its original character while reimagining the interior to maximise its use as a holiday home. The architects restored the walls made from noble African wood with a yellowish-brown tone, and put in Brazilian hardwood flooring. "We wanted to reconnect the house to the landscape – the dunes, waves and lagoon – as it's a place suited to outdoor living," says Simões. "The house is from a simpler era and we wanted to respect that."



"The coastal part of Aveiro is known as Portugal's Venice thanks to its canals and lagoon. Here gondolas, called *moliceiros*, have hand-painted prows and the seaside *palheiros*, fishermen's houses used to store nets, sport two-tone striped façades. Casa Azul, a compact modernist residence from the 1960's, blends into this landscape with its blue-and-white exterior that pays tribute to the area's unique vernacular. Originally designed by architect Pedro Bernardes, the home has been renovated by Lisbon architects João Carmo Simões and Daniela Sá."

Portugal

The
MONOCLE
Handbook



This practical guide will introduce you to the best that Portugal has to offer as we present our favourite spots across the country, from Lisbon to the Azores. Discover innovative retailers and traditional ateliers, as well as design-led hotels and unexplored beaches. We even reveal the smartest neighbourhoods to invest in should you decide to put down roots. It's time to pack your bags.

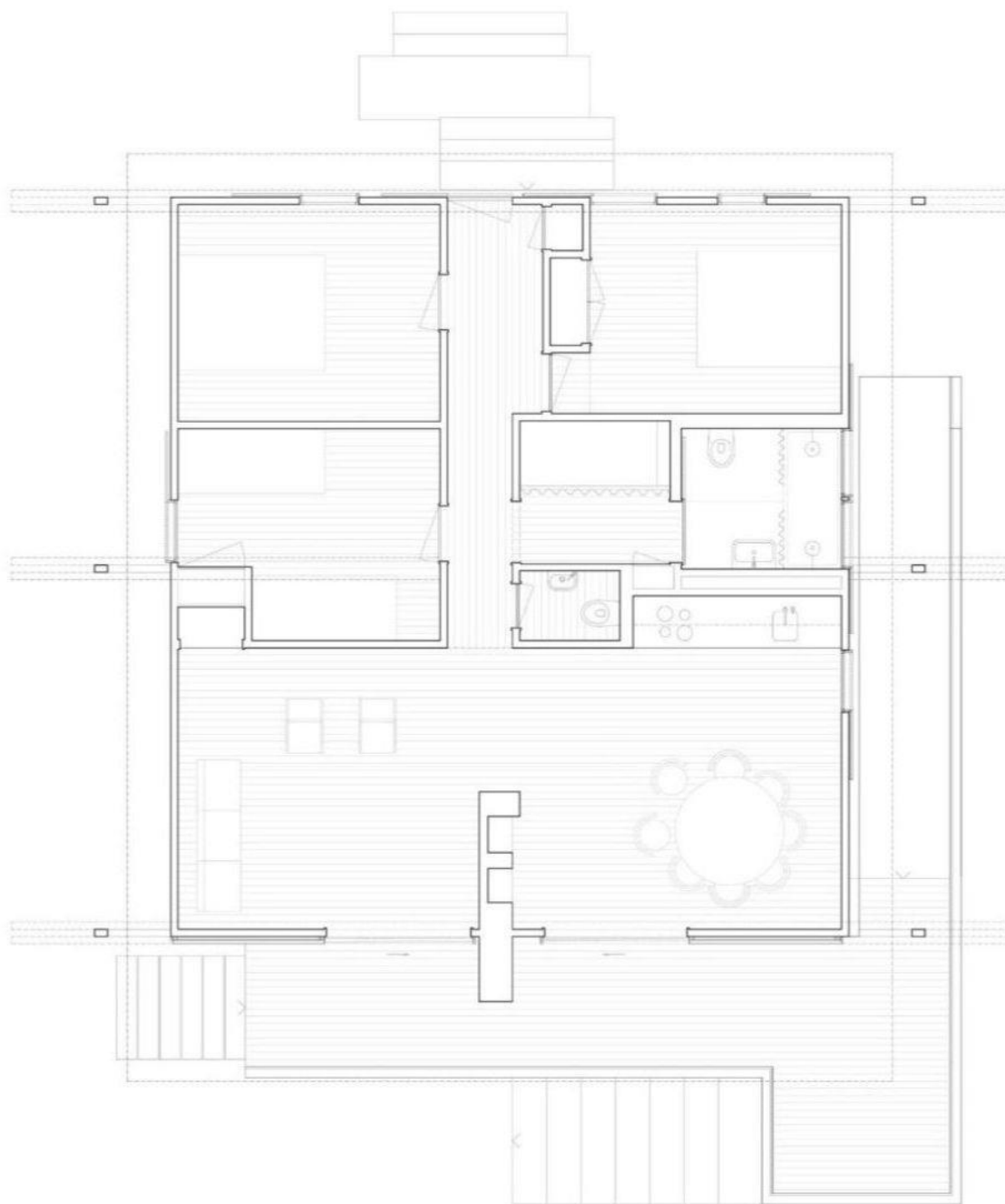
MONOCLE

Thames
&Hudson



"The pair have maintained its original character while rejigging the interior to maximise its use as a holiday home.

The architects restored the walls made from tola, an African wood with a yellowish-brown hue, and put in Brazilian hardwood flooring. "We wanted to reconnect the house to the landscape - the dunes, waves and lagoon - as it's a place suited to outdoor living," says Simões. "The house is from a simpler era and we wanted to respect that." "



[Ver mais sobre o projecto](#)

www.joaocarnosimoes.com



Share



Tweet



Share



Forward



João Carmo Simões ARQUITECTURA
Rua Rodrigues Sampaio 19, 5ºB
Lisboa 1150-278
Portugal